

Your Inspection Report

SEWER SCOPE REPORT Atlanta, GA

PREPARED FOR:

INSPECTION DATE:

PREPARED BY:
Chandler Stansell



Home-Probe
315 West Ponce de Leon Ave, Suite 559
Decatur, GA 30030

404-218-1040

www.home-probe.com
info@home-probe.com



Scan to download
report

We're more than great home inspections, we go way beyond that.

SEWER SCOP

Observations and Recommendations

WASTE PLUMBING \ Drain piping**1. Condition:** • Root Growth

There is root growth present which is commonly a result of a damaged drain line. We recommend further review and repair as needed.

Task: Consult with a qualified plumber

Time: As Soon As Possible

Cost: Depends on the preferred remedy of repair



1. End of Root Growth at 64.19'.



2. Continued Root Growth at 62.87'.



3. Continued Root Growth at 61.32'.



4. Start of Root Growth at 61.10'.

2. Condition: • Offset

There is an offset in the drain line where two pipes are not properly connected and there is a "lip" which can cause clogging. We recommend further review and repair as needed.

Task: Consult with a qualified plumber

Time: As Soon As Possible

SEWER SCOP

Cost: Depends on the preferred remedy of repair



5. Offset at 61'.

3. Condition: • Belly/Settling in pipe

There is a low point in the drain line which will promote clogging. We recommend further review and repair as needed.

Task: Consult with a qualified plumber

Time: As Soon As Possible

Cost: Depends on the preferred remedy of repair



6. Standing water in belly from 45'- 56.72'.



7. Belly/Settling in pipe at 45.03'.

4. Condition: • Debris/Blockages

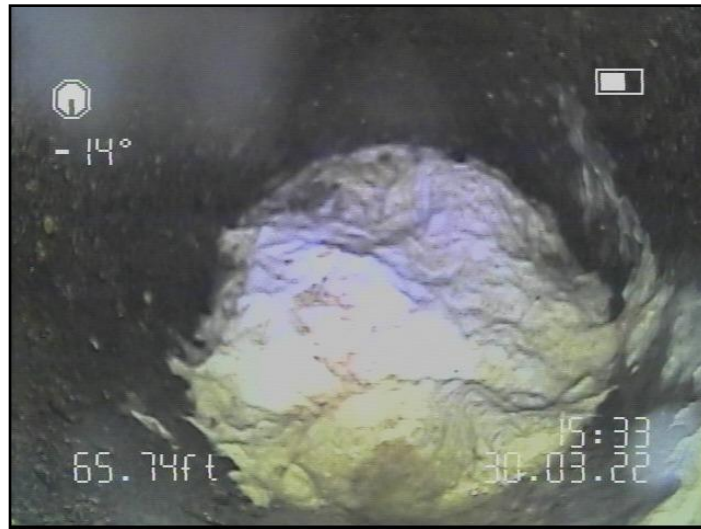
There is evidence of debris or blockages within the sewer line. This can cause backups and further complications.

Task: Consult with a qualified plumber

Time: As Soon As Possible

Cost: Depends on the preferred remedy of repair

SEWER SCOP



8. Debris/Blockage at 65.74'.

5. Condition: • Cast Iron drain line is present and has an average expected life of 40 - 60 years. Most Cast Iron in use will be near the end of its expected life and may require repairs or replacement in the near future.

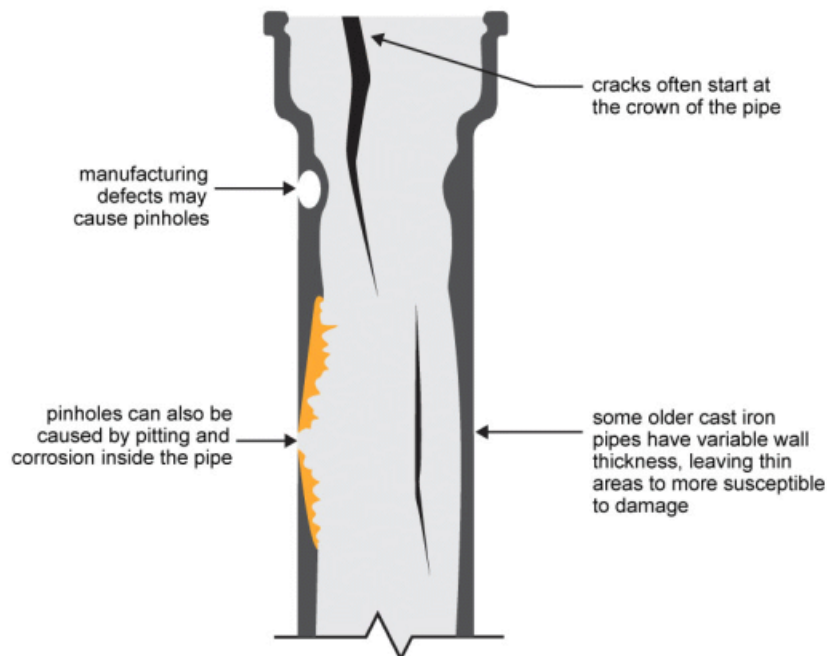
Implication(s): Near end of life

Task: Consult with a qualified plumber

Time: Unpredictable

Cost: Depends on the preferred remedy of repair

Pinholing and cracks in cast iron stacks



6. Condition: • Hairline Cracking

SEWER SCOP



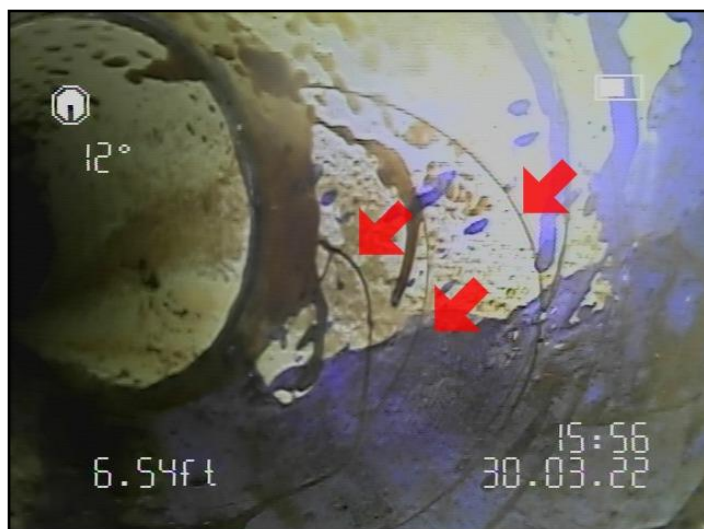
9. Cracking at 29.39'.



10. Cracking at 18.66'.



11. Cracking at 7.54'.



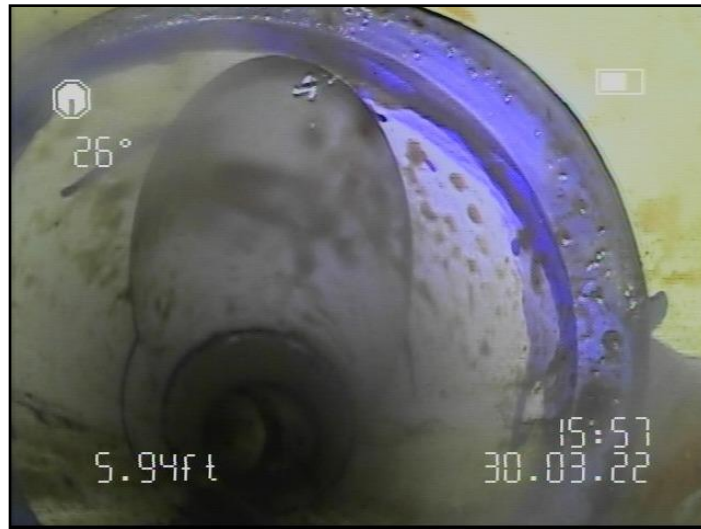
12. Cracking at 6.54'.

Description

General:

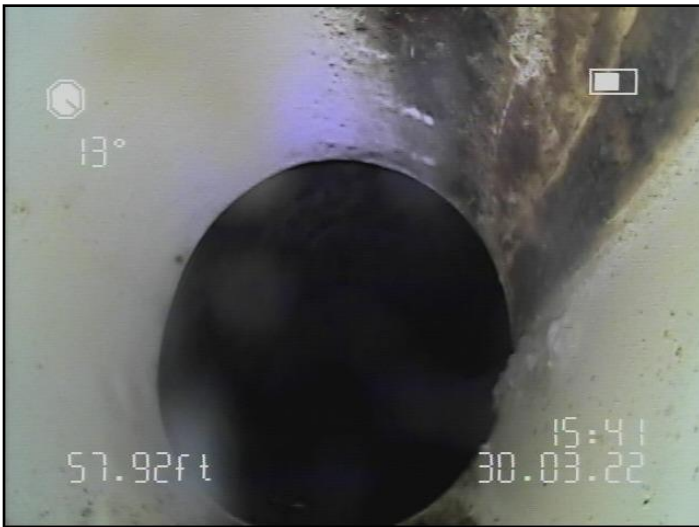
- Junctions

SEWER SCOP



13. Junction at 6'. Origin unknown.

- Pipe material changes



14. PVC to Cement at 58'.

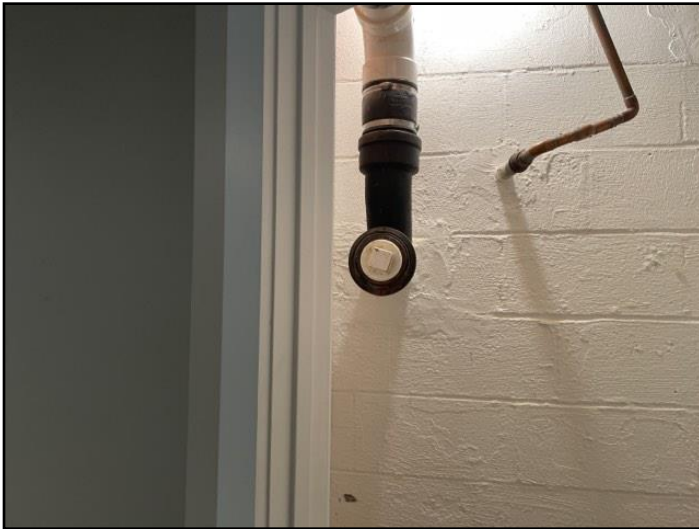


15. Cast Iron to PVC at 4.45'.

Point of entry:

- Basement cleanout

SEWER SCOP



16. Basement cleanout.



17. Before.



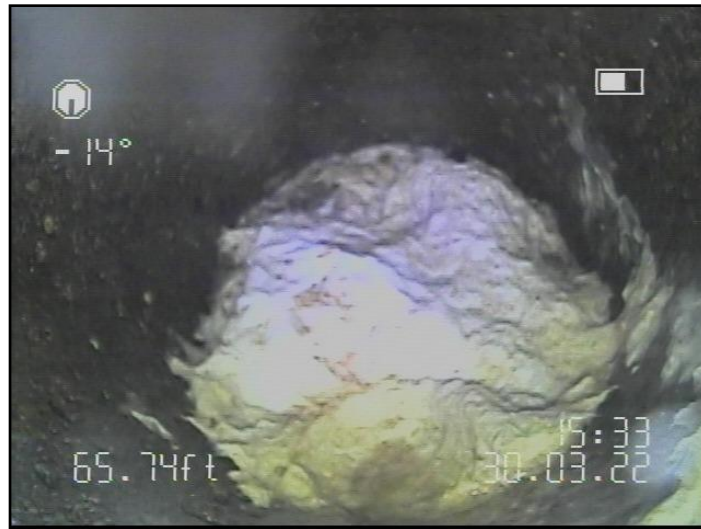
18. After.

Waste piping material: • PVC waste line typically has an expected lifespan of 100 years or more. • Cast Iron drain lines have an average expected life of 40 - 60 years • The presence of cement drain line may be the result of prior repairs - Recommend requesting disclosure and possible further evaluation.

Distance scoped:

- The camera was not run to full capacity due to pipe obstructions

SEWER SCOP



19. Debris impeding further progress at 65.74'.

Inspection Methods and Limitations

Inspection limited/prevented by: • Obstruction in pipe

END OF REPORT